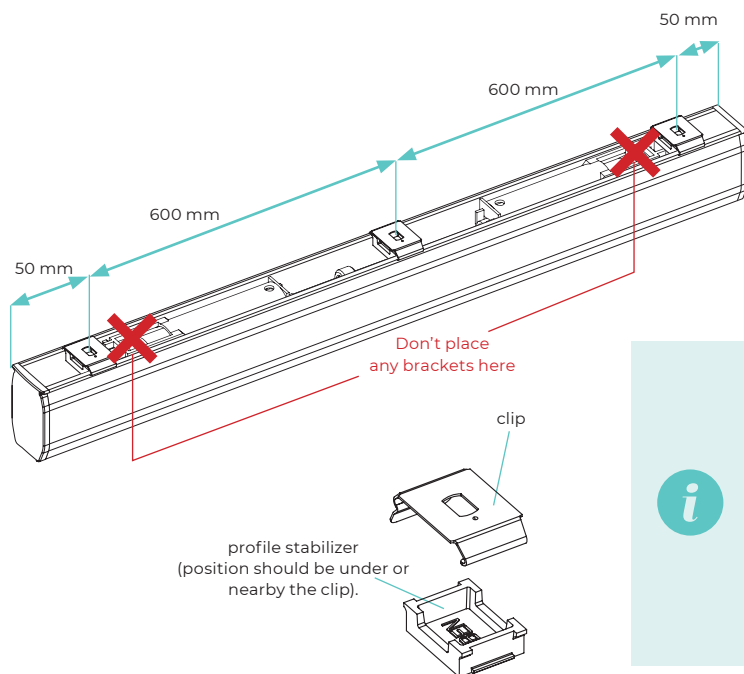


### Placement of the clips on the profile



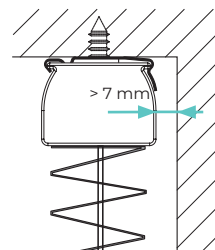
Mount the clips 50 mm from the end of the headrail, and with a distance of max. 600 mm.



Attention! Make sure the brackets are not fixed on top of the spools in the headrail.



It is recommended to mount the clip with the flap forward (into the room). The clip can only be mounted with the flap toward the window or the pane respectively, in case the distance to the rail is min. 7mm.



### Mounting of the pleated blind on the ceiling

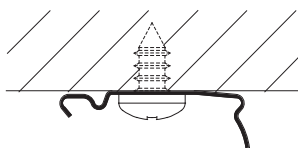
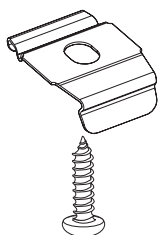
- 1 Mount the clips on the ceiling with a screw



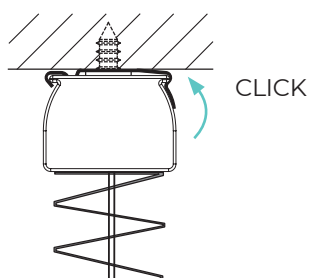
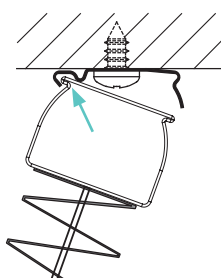
DIN 7982  $\varnothing$  3,9 x 13 mm



DIN 7981  $\varnothing$  2,9 x 9,5 mm



- 2 Place the profile in the back edge of the clip and push the front of the profile upwards (until it clicks).

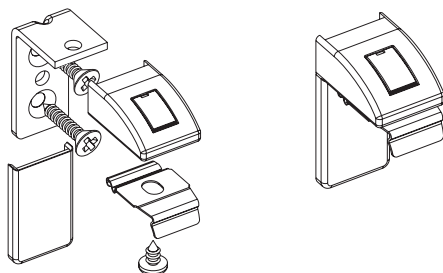


## Mounting of the pleated blind on the wall

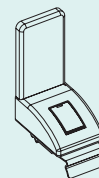
- 1 Mount the bracket on the wall and attach the clip.

  
DIN 7982  $\varnothing$  3,9 x 13 mm

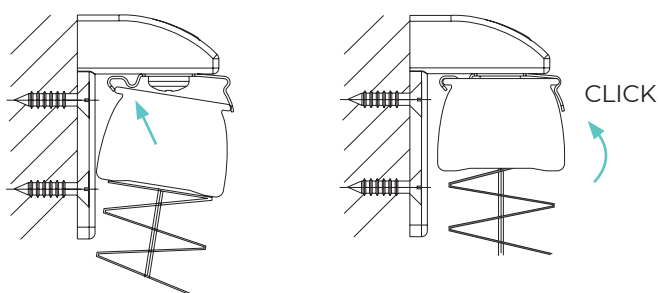
  
DIN 7981  $\varnothing$  2,9 x 9,5 mm



Alternative mounting



- 2 Place the profile in the back edge of the clip and push the front of the profile upwards (until it clicks).

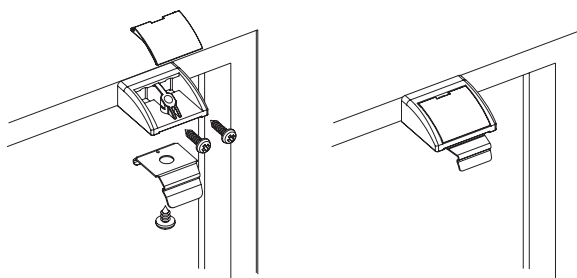


## Mounting of the pleated blind with glazing bead support

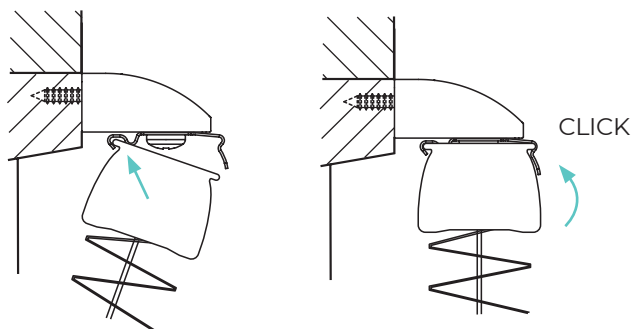
- 1 Install the support with moulding locking strip and attach the clip.

  
DIN 7982  $\varnothing$  3,9 x 13 mm

  
DIN 7981  $\varnothing$  2,9 x 9,5 mm

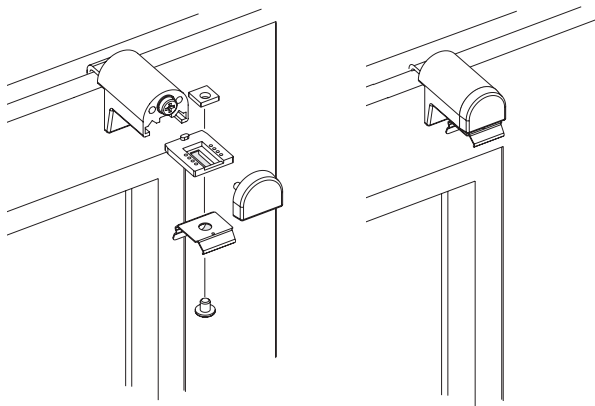


- 2 Place the profile in the back edge of the clip and push the front of the profile upwards (until it clicks).

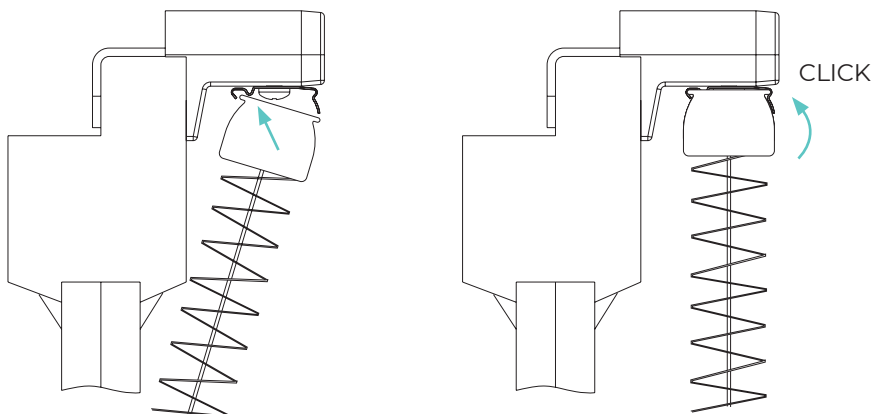


## Mounting the pleated blind with block holder

- 1 Install the block holder and attach the clip.

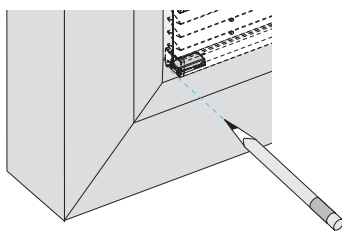


- 2 Place the profile in the back edge of the clip and push the front of the profile upwards (until it clicks).

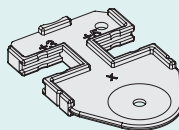


## Mounting of tension cord bracket

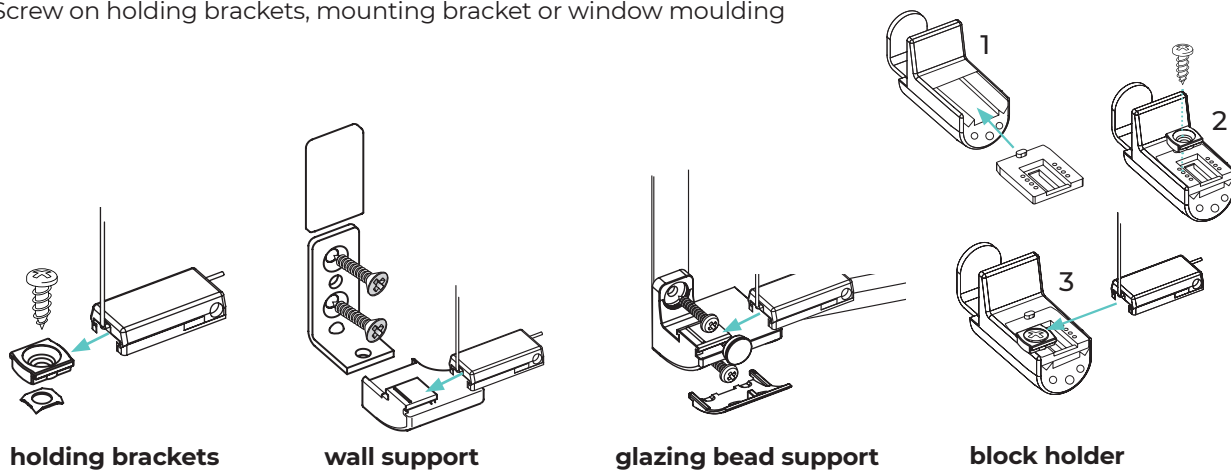
- 1 Let down the blind and mark the position for the clamping shoe.



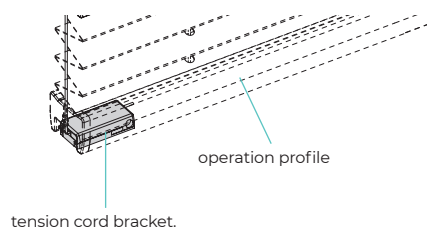
You can also use the fixing template (green) to mark the position. (see separate sheet)



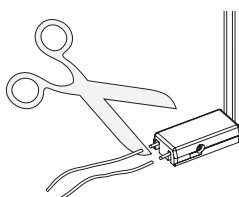
**2** Screw on holding brackets, mounting bracket or window moulding



**3** Check the operation of the blind.



**4** Cut off the excess cord ends



Adjustment of the cord tension must be uniform and may only be made by a professional.