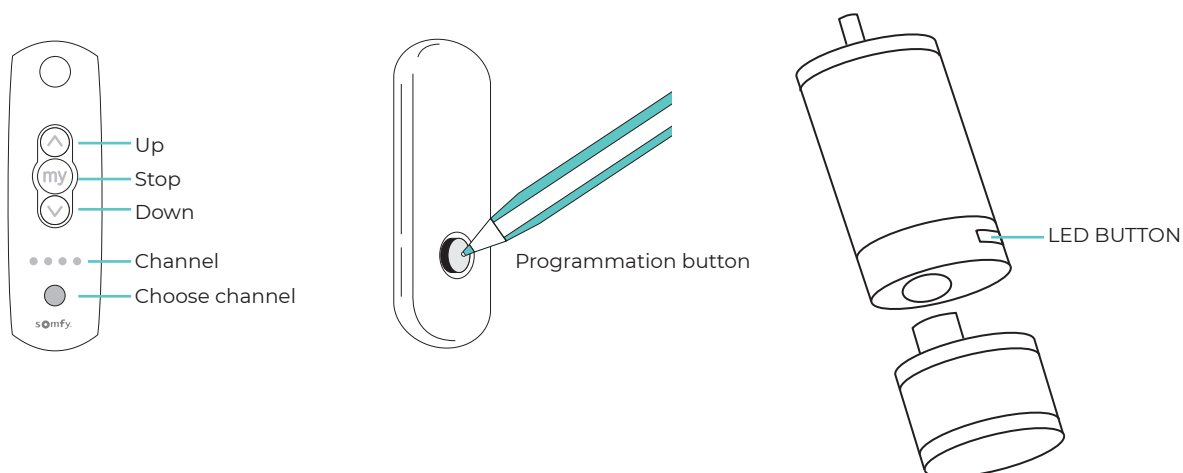


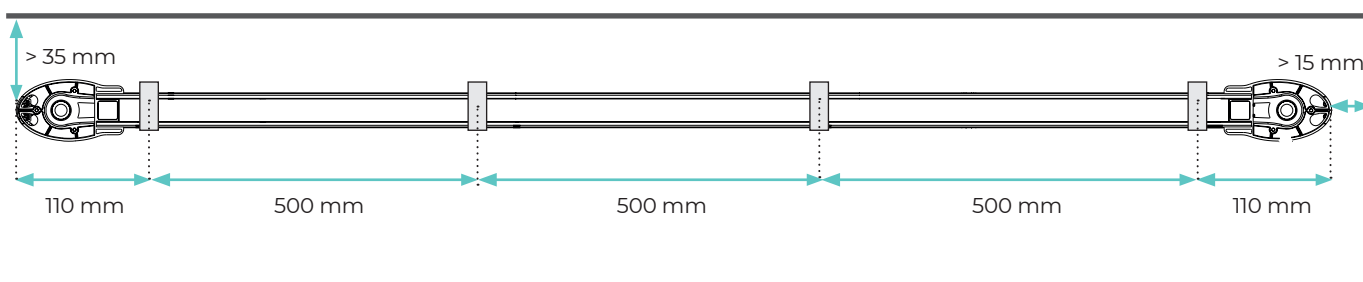
Curtain rail Somfy Glydea 12V motor

Introduction

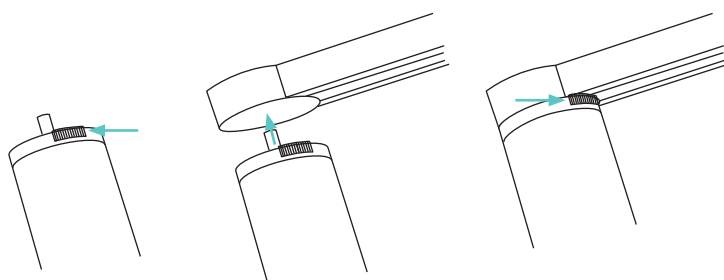


Installation of the brackets

- 1** Install the first and last brackets at about 11 cm from the end of the rail.
- 2** Divide the other brackets evenly between the outer brackets.

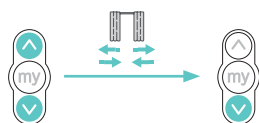


Installation of the motor onto the rail



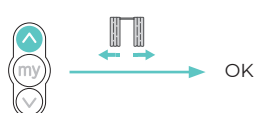
Connection of the motor 12V (Irisimo 45)

- 1 Connect the RTS control to the motor
De motor is looking for the end points.

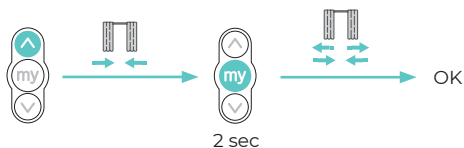


Attach the curtain to the rail before the programming. With the first command the curtain will open and close completely, to determine the end positions.

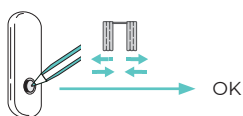
- 2 Check rotation direction



OR



- 3 Programmation of the remote control



If the battery is almost empty, the motor will make 1x beep noise and the red LED will blink a few seconds. The battery needs to be charged.

Reset of the motor

- 1 Push the led button on the motor until the blind opens & shuts 3 times.